

ULTRASUITE[®] + STRUCTURE

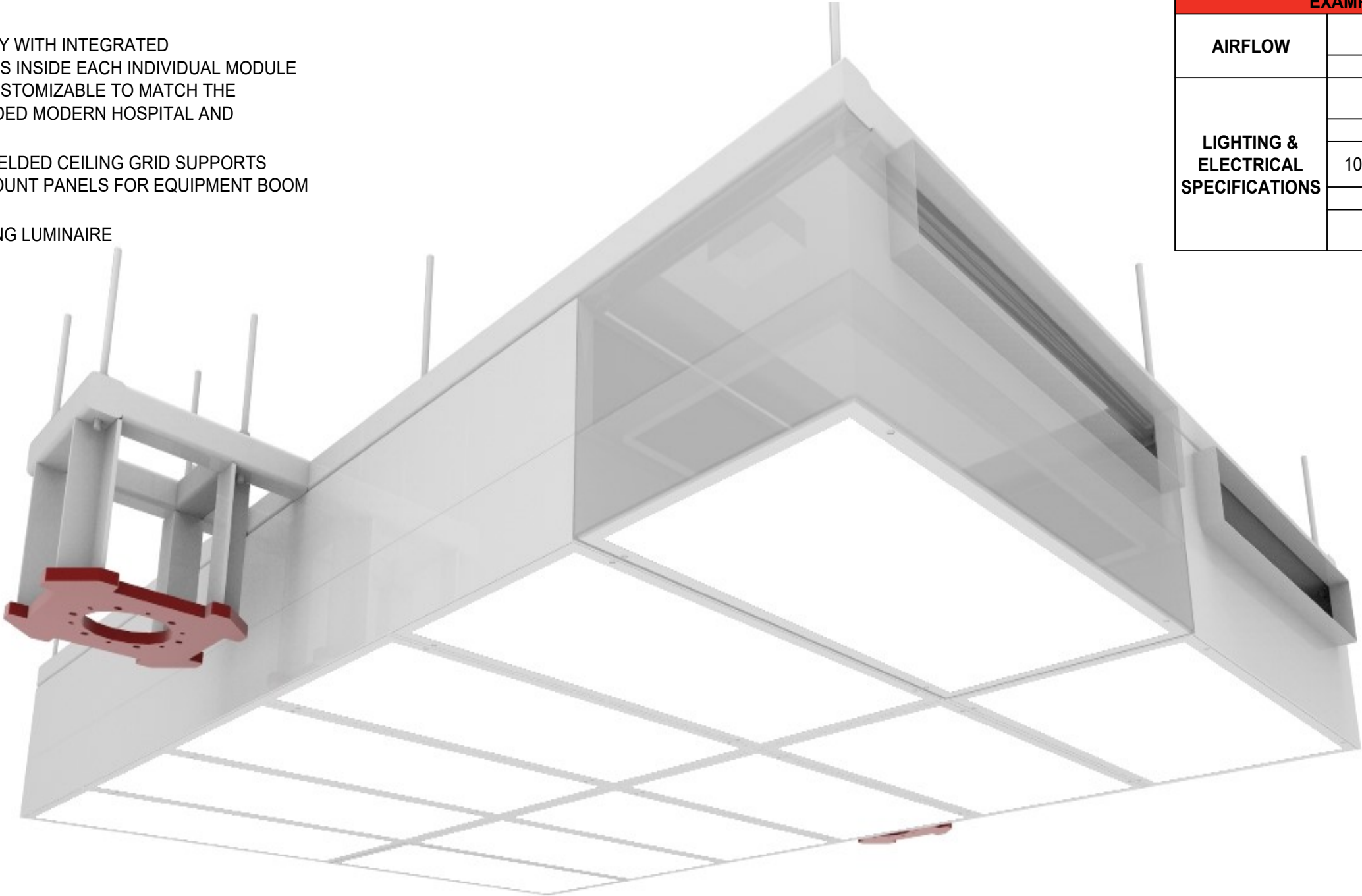
OPERATING ROOM DIFFUSER SYSTEM WITH INTEGRATED LED LIGHTING AND STEEL STRUCTURAL SUPPORT

EXAMPLE SYSTEM FOR A TRADITIONAL OR

FEATURES:

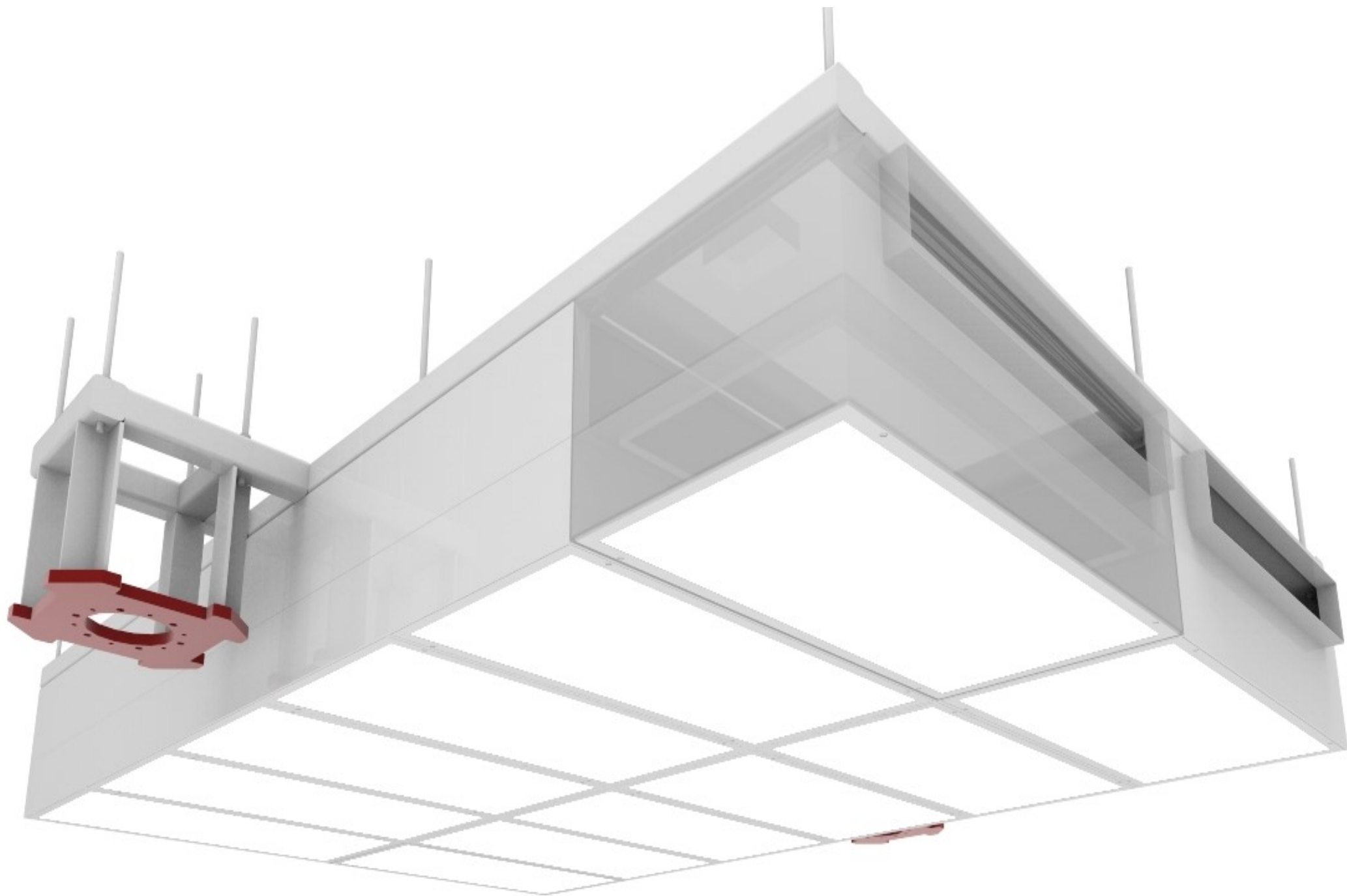
- LAMINAR FLOW DIFFUSER ARRAY WITH INTEGRATED HIGH-PERFORMANCE LED LIGHTS INSIDE EACH INDIVIDUAL MODULE AND HSS STRUCTURE FULLY CUSTOMIZABLE TO MATCH THE DEMANDING AND OFTEN CROWDED MODERN HOSPITAL AND CLEANROOM CEILING LAYOUTS
- OPTIONAL PERIMETER HGWC WELDED CEILING GRID SUPPORTS ACCESS PANELS AND FLUSH-MOUNT PANELS FOR EQUIPMENT BOOM INTEGRATION
- UL 1598 CERTIFIED, AIR-HANDLING LUMINAIRE

EXAMPLE SYSTEM		
AIRFLOW	2400	CFM
	20	ACH
LIGHTING & ELECTRICAL SPECIFICATIONS	5000K	COLOUR TEMPERATURE
	95	CRI
	100% TO 1%	DIMMING
	0-10V	
	277	INCOMING VOLTAGE



ULTRASUITE[®] + STRUCTURE

OPERATING ROOM DIFFUSER SYSTEM WITH INTEGRATED LED LIGHTING AND STEEL STRUCTURAL SUPPORT 3D INTERACTIVE MODEL - TRADITIONAL OR




ORDER OF INSTALLATION
(CLICK BUTTONS TO TOGGLE VIEWS)

- ULTRASUITE +STRUCTURE
(View A)
- ULTRASUITE +STRUCTURE
(View B)
- ULTRASUITE +STRUCTURE
(View C)
- HGWC CEILING GRID
(View A)
- HGWC CEILING GRID
(View B)
- CP-SCF CEILING PANELS
- CP-SC CEILING PANELS
- FINAL INSTALLATION

- USE THE SCROLL WHEEL TO ZOOM
 - HOLD DOWN THE LEFT MOUSE BUTTON TO ROTATE
 - HOLD DOWN CTRL AND LEFT MOUSE BUTTON TO MOVE
- BOOM SUPPORT AND STRUCTURE PROVIDED BY PRICE
BOOM AND BOOM PLATE PROVIDED AND INSTALLED BY OTHERS

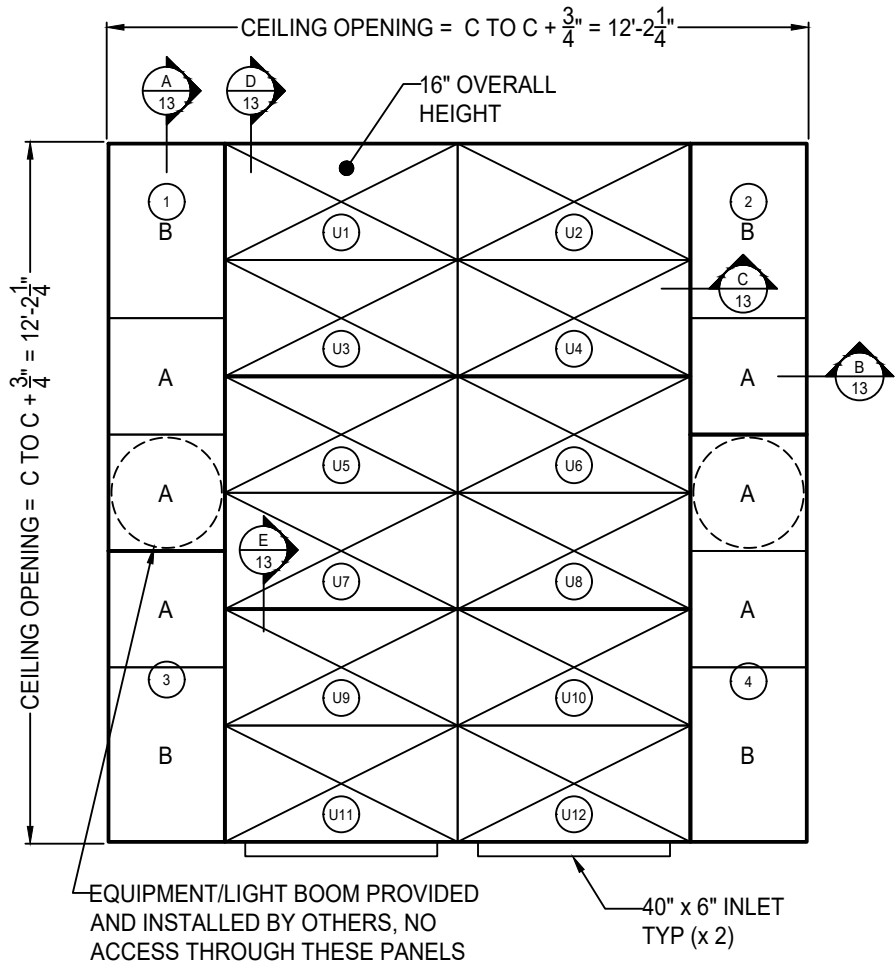
CLICK IMAGE TO
ACTIVATE 3D PDF



 CRITICAL ENVIRONMENTS		
Project:		
271596	Revision: A	08-01-2023

ULTRASUITE[®] + STRUCTURE

OPERATING ROOM DIFFUSER SYSTEM WITH INTEGRATED LED LIGHTING AND STEEL STRUCTURAL SUPPORT
REFLECTED CEILING PLAN - TRADITIONAL OR

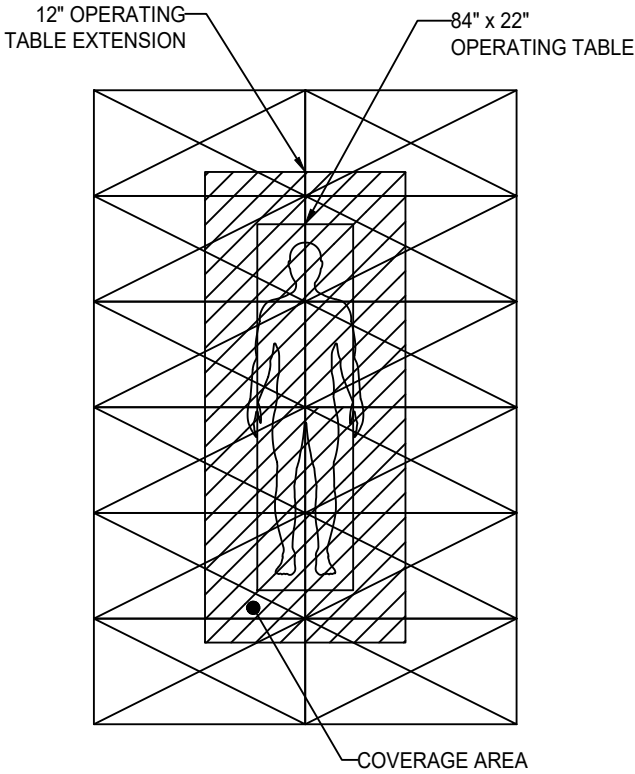


USA AREA = 96 sq. ft. HGWC AREA = 51 sq. ft.

USA - ULTRASUITE MODULES	HGWC LOOSE HALF TEE PERIMETER TRIM PIECE	SCF - SOLID CORE FLUSH MOUNT PANELS	SC - SOLID CORE ACCESS PANELS
24 x 48 (x 12)	120" (x 2)	A: 24 x 24 (x 2)	A: 24 x 24 (x 4) B: 24 x 36 (x 4)

- B12 STANDARD WHITE FINISH
- PANEL CUTOUTS FOR BOOMS DONE IN FIELD BY OTHERS
- THE CEILING IS FACTORY PREMANUFACTURED TO SIZES AND TOLERANCE +/- $\frac{1}{16}$ "
- SITE ADJUSTMENTS TO PERIMETER SOFFITS AND/OR DRYWALL MAY BE REQUIRED AND ARE THE RESPONSIBILITY OF THE INSTALLER
- ASHRAE 170 VERIFICATION IS SHOWN TO ASSIST IN PROJECT COORDINATION. FINAL ASHRAE 170 COMPLIANCE, AS WELL AS COMPLIANCE WITH ALL APPLICABLE LOCAL CODES AND REQUIREMENTS REMAINS THE RESPONSIBILITY OF THE EOR OR INSTALLER ON THE PROJECT

ASHRAE 170-2021 TABLE COVERAGE VERIFICATION - TRADITIONAL OR



THIS LAYOUT COMPLIES WITH ASHRAE 170-2021 7.4.1.b.	
ASHRAE 170-2021 7.4.1.a. COMPLIANCE AIRFLOW RANGE	ASHRAE 170-2021 7.4.1.b. COMPLIANCE
2400 - 3360 CFM BASED ON 96 SQFT	0% OF THE 12" OPERATING TABLE EXTENSION USED FOR NON DIFFUSER USES

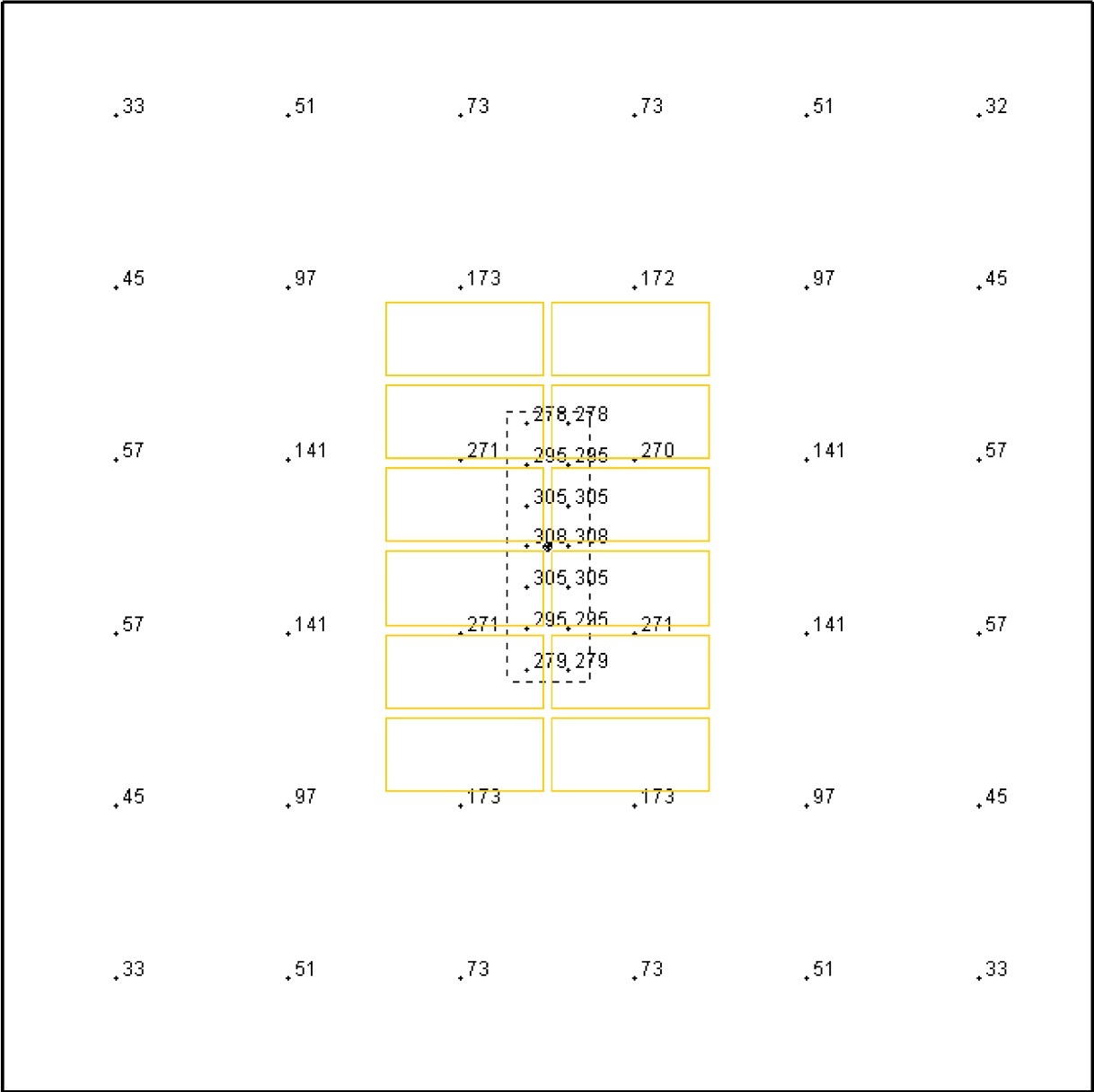
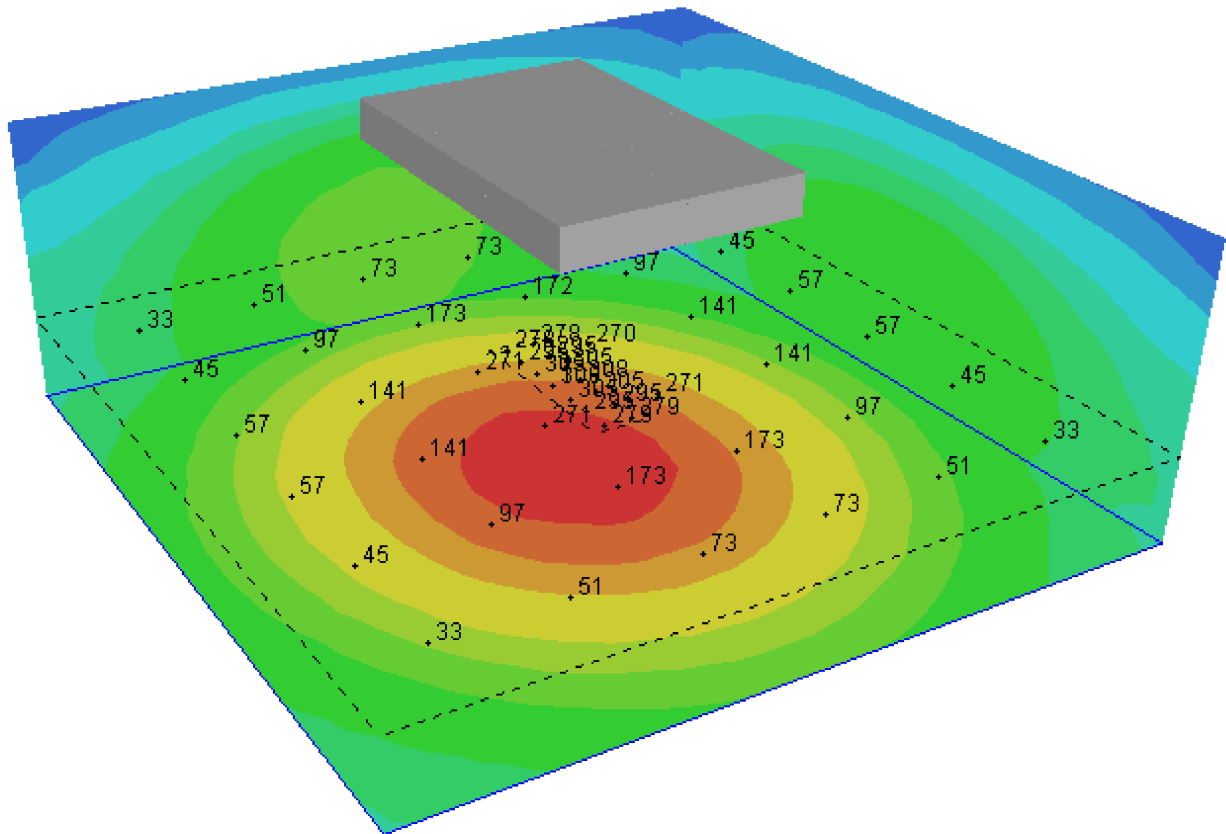
ASHRAE 170-2021
7.4.1.a. - THE AIRFLOW SHALL BE UNIDIRECTIONAL, DOWNWARDS, AND THE AVERAGE VELOCITY OF THE DIFFUSERS SHALL BE 25 TO 35 CFM/SQFT (127 TO 178 L/S/SQM). THE DIFFUSERS SHALL BE CONCENTRATED TO PROVIDE AN AIRFLOW PATTERN OVER THE PATIENT AND SURGICAL TEAM.
7.4.1.b. - THE COVERAGE AREA OF THE PRIMARY SUPPLY DIFFUSER ARRAY SHALL EXTEND A MINIMUM OF 12 IN. (305 mm) BEYOND THE FOOTPRINT OF THE SURGICAL TABLE ON EACH SIDE. WITHIN THE PORTION OF THE PRIMARY SUPPLY DIFFUSER ARRAY THAT CONSISTS OF AN AREA ENCOMPASSING 12 IN. (305mm) ON EACH SIDE OF THE FOOTPRINT OF THE SURGICAL TABLE, NO MORE THAN 30% OF THIS PORTION OF THE PRIMARY SUPPLY DIFFUSER ARRAY AREA SHALL BE USED FOR NON DIFFUSER USES SUCH AS LIGHTS, GAS COLUMNS, EQUIPMENT BOOMS, ACCESS PANELS, SPRINKLERS, ETC.

Project:		
271596	Revision: A	08-01-2023

ULTRASUITE[®] + STRUCTURE

OPERATING ROOM DIFFUSER SYSTEM WITH INTEGRATED LED LIGHTING

PHOTOMETRIC ANALYSIS - TRADITIONAL OR



OPERATING TABLE		OPERATING AREA	
MAXIMUM	308 fc	MAXIMUM	271 fc
AVERAGE	295 fc	AVERAGE	104 fc

- PHOTOMETRIC ANALYSIS BASED ON A 3' CALCULATION ZONE, 720 ROOM SQFT & 10' CEILING HEIGHT.
- ANSI/IES RP-29-16 RECOMMENDS 3000 LUX (279 FC) AT THE OPERATING TABLE
- THE CALCULATED VALUES REFLECT ADDITIONAL SPACE LIGHTING BY OTHERS.
- LIGHTING ANALYSIS HAS BEEN PERFORMED USING THIRD PARTY LAB TESTED .IES FILES.
- THIS LAYOUT REFLECTS TWO ROWS OF 5000K, 95 CRI LEDS PER MODULE. A THIRD ROW, HIGH OUTPUT OPTION IS AVAILABLE.
- LIGHTING CALCULATIONS ARE ESTIMATED USING BEST PRACTICE AND MAY DIFFER SLIGHTLY FROM ACTUAL FIELD CONDITIONS.

LUMINAIRE HEIGHT: 10 FT
CALCULATION ZONE: 3 FT

price

CRITICAL ENVIRONMENTS

Project:

271596

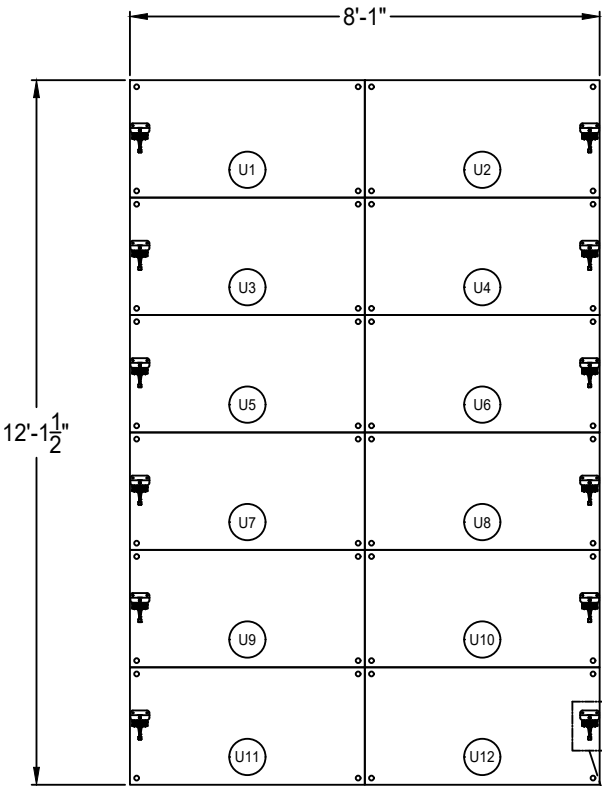
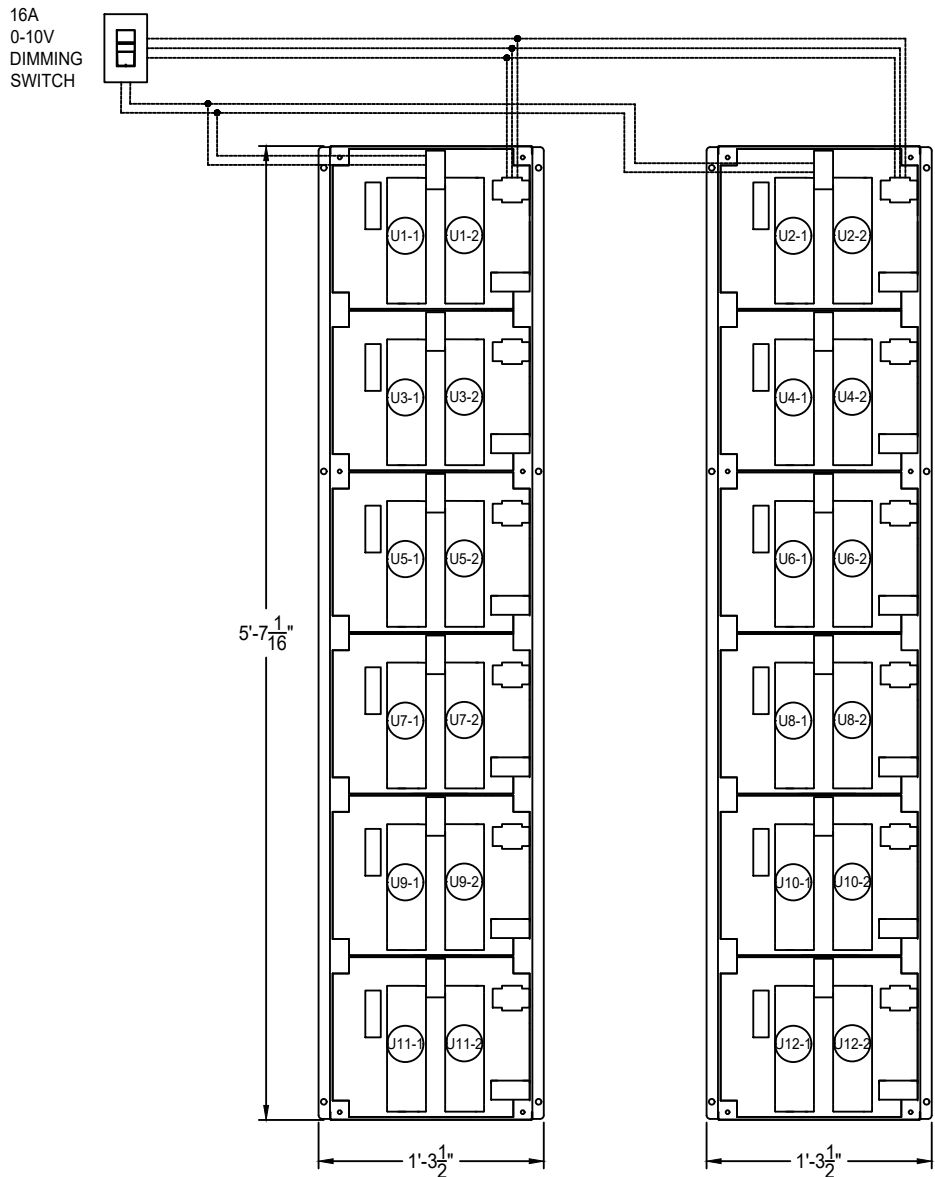
Revision: A

08-01-2023

ULTRASUITE[®] + STRUCTURE

OPERATING ROOM DIFFUSER SYSTEM WITH INTEGRATED LED LIGHTING AND STEEL STRUCTURAL SUPPORT

○ URDC ULTRA REMOTE DRIVER CABINETS - SINGLE DIMMING ZONE (100 TO 1% DIMMING) - TRADITIONAL OR



CABINET 1 - 1 OF 2 - CONTROLS 6			
MODULES WITH 12 DRIVERS			
DRIVER TAG	LED WATTAGE	DRIVER TAG	LED WATTAGE
U1-1	88	U1-2	88
U3-1	88	U3-2	88
U5-1	88	U5-2	88
U7-1	88	U7-2	88
U9-1	88	U9-2	88
U11-1	88	U11-2	88
TOTAL WATTAGE:		AC CURRENT:	
1056		4.8A/277VAC	

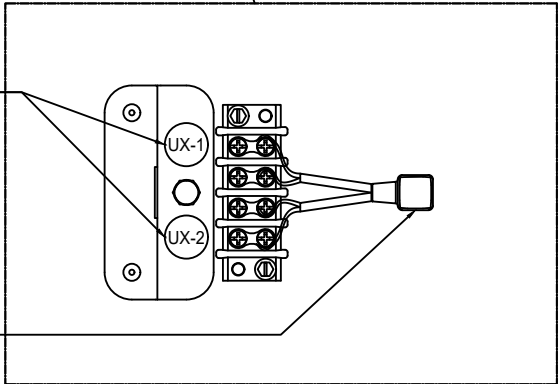
CABINET 2 - 2 OF 2 - CONTROLS 6			
MODULES WITH 12 DRIVERS			
DRIVER TAG	LED WATTAGE	DRIVER TAG	LED WATTAGE
U2-1	88	U2-2	88
U4-1	88	U4-2	88
U6-1	88	U6-2	88
U8-1	88	U8-2	88
U10-1	88	U10-2	88
U12-1	88	U12-2	88
TOTAL WATTAGE:		AC CURRENT:	
1056		4.8A/277VAC	



EACH STANDARD MODULE COMES WITH TWO ROWS OF LEDS THAT EACH REQUIRE ONE (+ & -) LOW VOLTAGE FIELD CONNECTION AND ARE NOTED BY A "UX-X" LABEL. A THIRD ROW, HIGH OUTPUT OPTION IS AVAILABLE IF REQUIRED.

EACH STANDARD MODULE COMES WITH 2 ROWS OF LED LIGHTS AND EACH ROW OF LIGHTS IS NOTED BY A "UX-X" LABEL. THE "UX" CORRESPONDS TO AN INDIVIDUAL MODULE REFERENCED IN THE RCP AND THE "-1" AND "-2" CORRESPONDS TO THE ROW OF LEDS FOR THAT MODULE. EACH "UX-X" LABEL CORRESPONDS TO ONE (+ & -) LOW VOLTAGE WIRE TO BE FIELD CONNECTED TO URDC DRIVER CABINET AS PER THE MATCHING LABELS. EACH 100W DRIVER CAN POWER 1 ROW OF LEDS (ONE HALF OF A MODULE) AND EACH 600W DRIVER CAN CONTROL 6 ROWS OF LEDS (3 MODULES)

EACH MODULE COMES WITH A TOP MOUNTED TERMINAL BLOCK ENCLOSURE (COVER NOT SHOWN) FOR LOW VOLTAGE FIELD CONNECTIONS. QUICK CONNECT FITTING IS SEALED THROUGH PLENUM AND ALL INTERNAL WIRING IS COMPLETED IN THE FACTORY. EACH ROW OF LEDS REQUIRES ONE (+&-) LOW VOLTAGE FIELD CONNECTIONS (TWO PER MODULE)

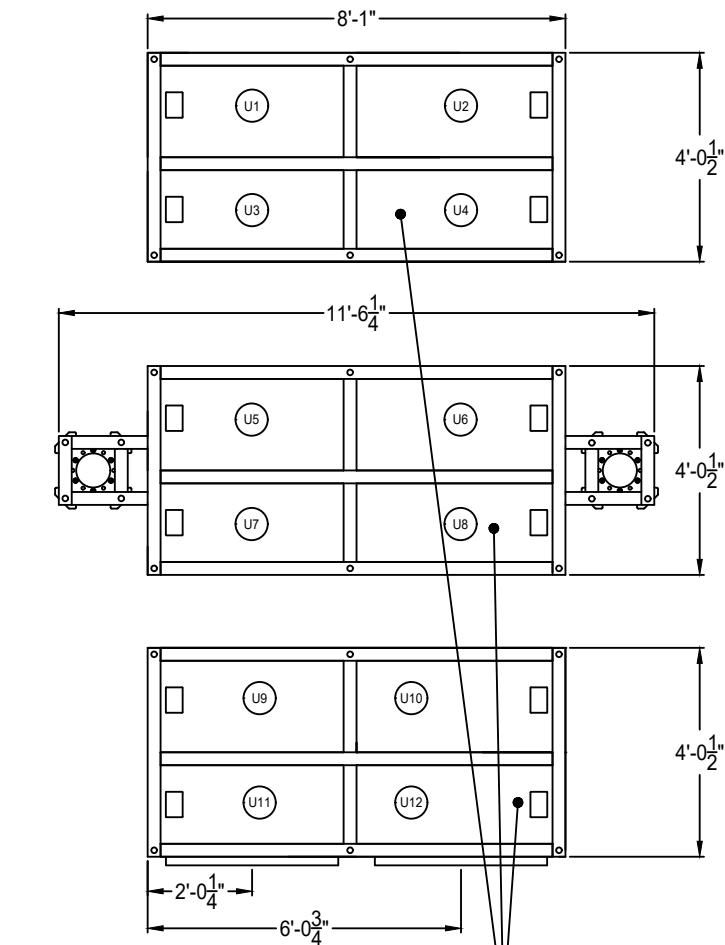


price CRITICAL ENVIRONMENTS		
Project:		
271596	Revision: A	08-01-2023

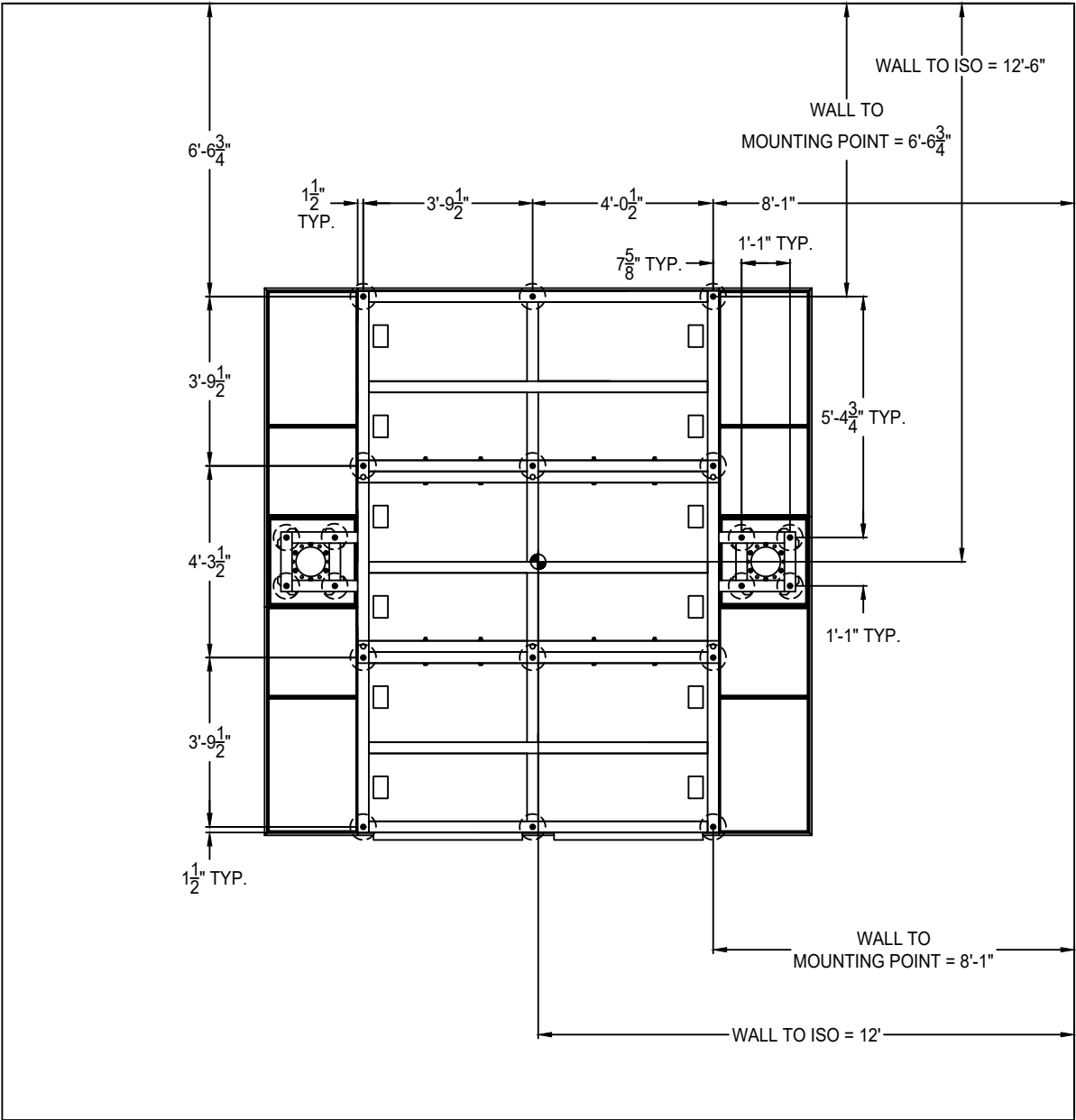
- INSTALLATION WORK AND ELECTRICAL WIRING MUST BE COMPLETED BY A CERTIFIED ELECTRICIAN AND/OR QUALIFIED PERSON(S) IN ACCORDANCE WITH APPLICABLE ELECTRICAL CODES AND STANDARDS

ULTRASUITE® + STRUCTURE

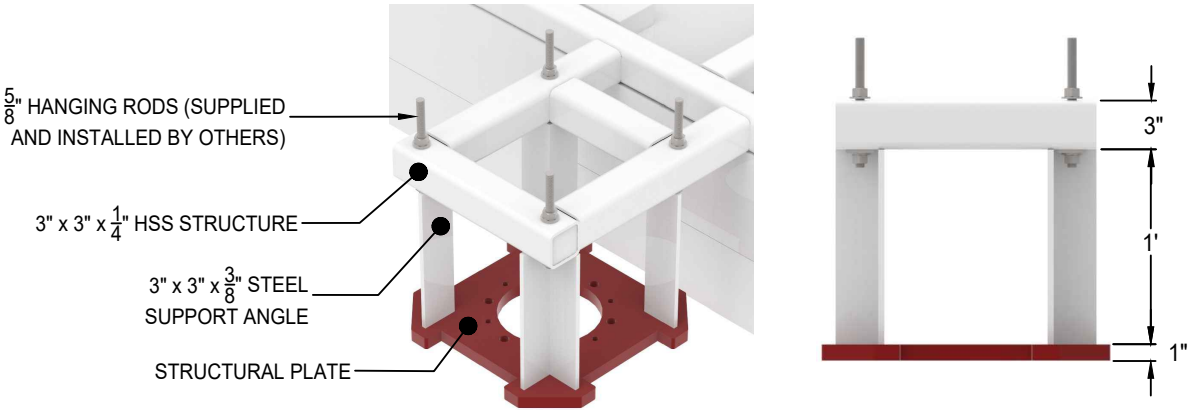
OPERATING ROOM DIFFUSER SYSTEM WITH INTEGRATED LED LIGHTING AND STEEL STRUCTURAL SUPPORT ULTRASUITE SHIP SECTIONS & STRUCTURAL MOUNTING LOCATIONS - TRADITIONAL OR



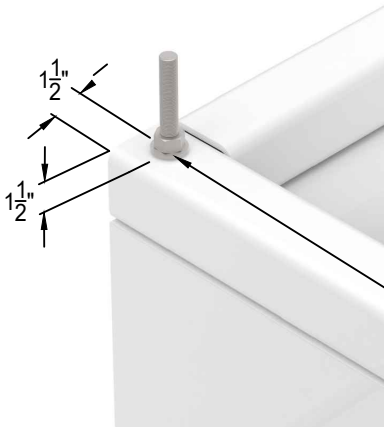
ULTRASUITE +STRUCTURE SYSTEM SHIPS
IN 3 SECTIONS TO BE FASTENED
TOGETHER IN THE FIELD BY
OTHERS WITH HARDWARE PROVIDED BY PRICE



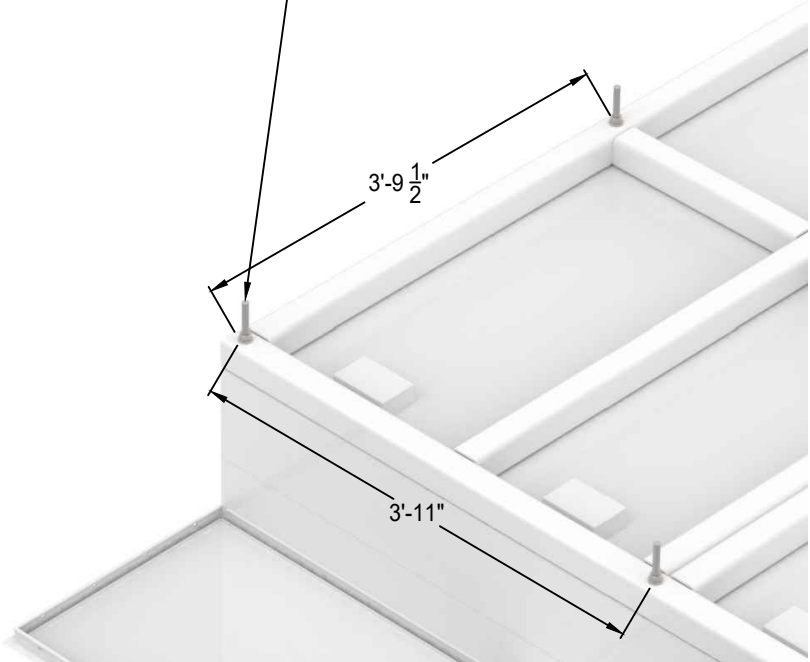
TYPICAL BOOM MOUNT DETAILS



TYPICAL THREADED ROD
MOUNTING POINT DETAILS



PRE-DETERMINED HANGING LOCATIONS
FOR 5/8" THREADED ROD, TYP., (x 20)
5/8" THREADED ROD PROVIDED AND
INSTALLED BY OTHERS



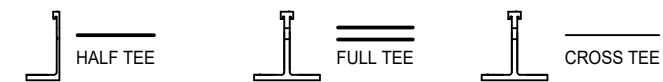
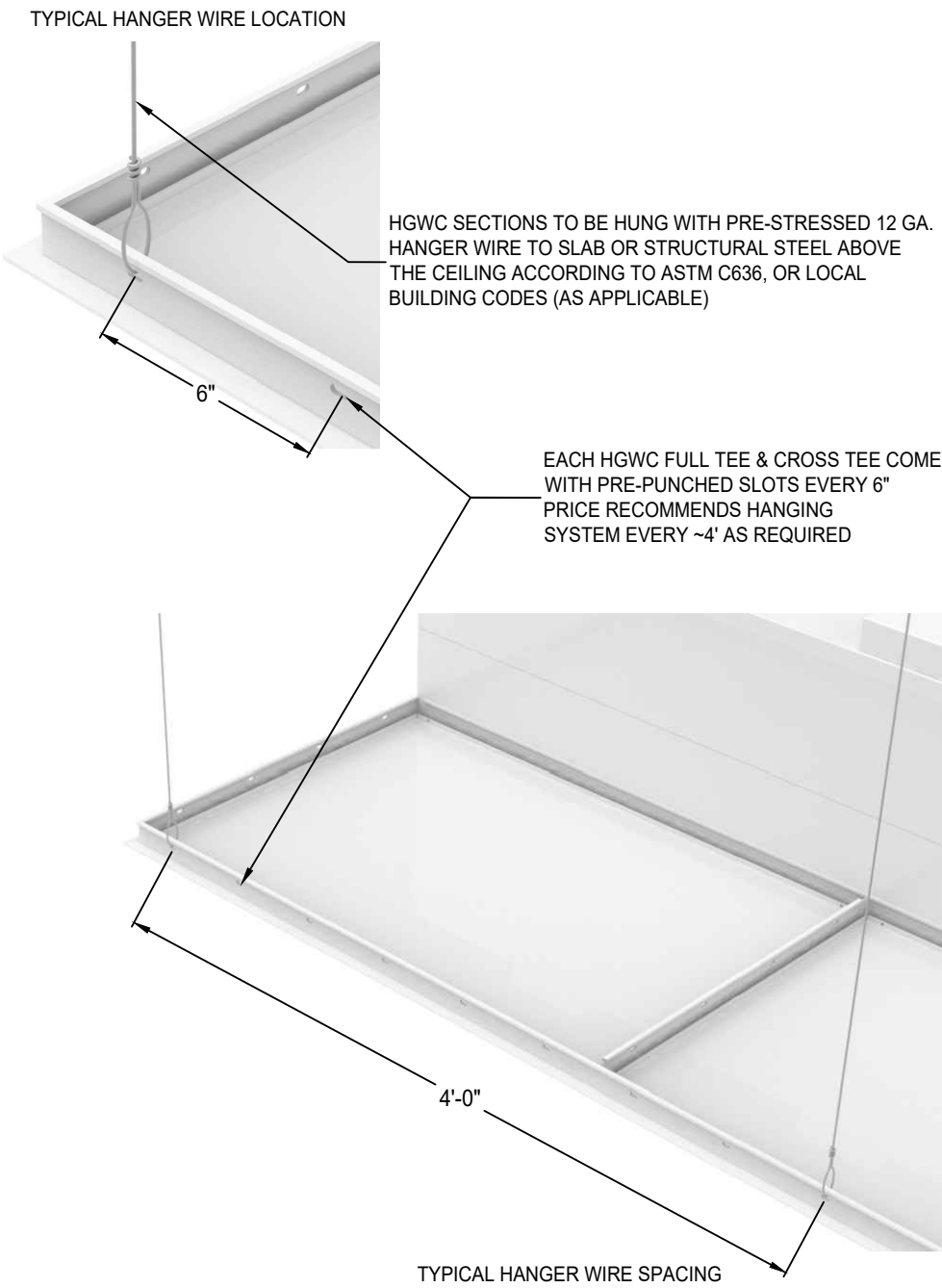
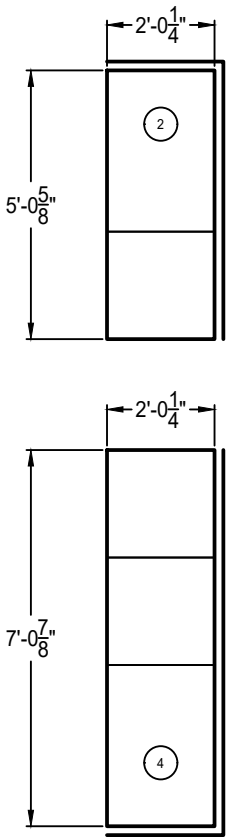
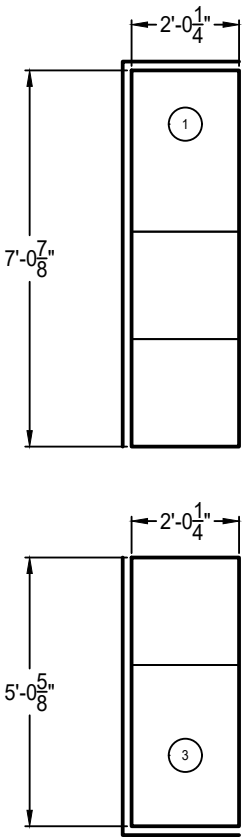
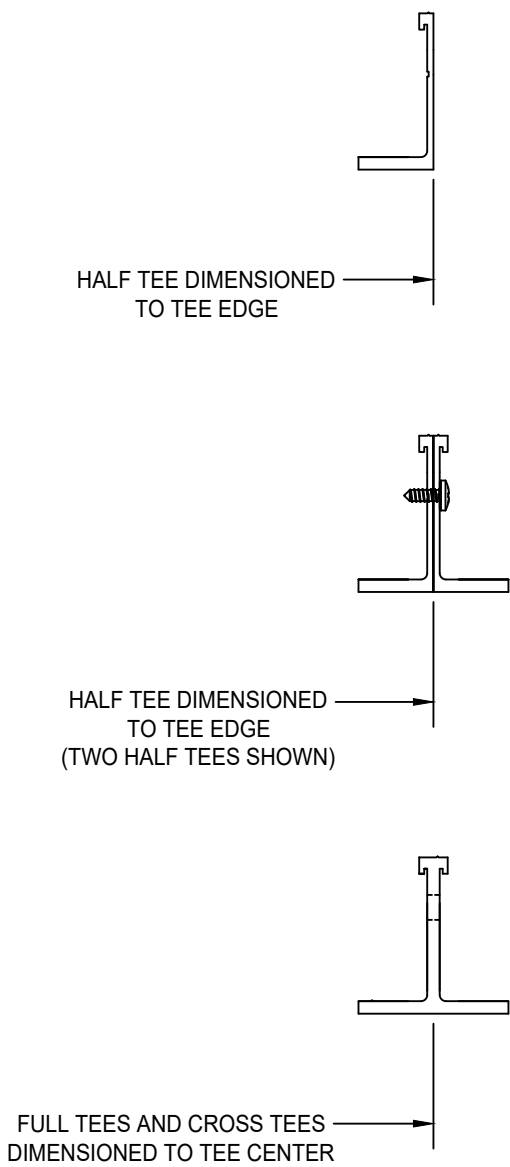
TYPICAL THREADED ROD SPACING

- PRE-DETERMINED MOUNTING LOCATIONS FOR 5/8" THREADED ROD SHOWN
- STAMPED STRUCTURAL CALCULATIONS PROVIDED BY PRICE AT TIME OF ORDER

price CRITICAL ENVIRONMENTS		
Project:		
271596	Revision: A	08-01-2023

ULTRASUITE[®] + STRUCTURE

OPERATING ROOM DIFFUSER SYSTEM WITH INTEGRATED LED LIGHTING AND STEEL STRUCTURAL SUPPORT
HGWC SHIP SECTION BREAKDOWN & HANGING DETAILS - TRADITIONAL OR



- THE HGWC GRID IS SUPPLIED IN MULTIPLE FACTORY ASSEMBLED SECTIONS NO LARGER THAN 10'x4'
- THE CEILING IS FACTORY PRE-MANUFACTURED TO SIZES AND TOLERANCE +/- ¹/₁₆"

price | **CRITICAL ENVIRONMENTS**

Project:

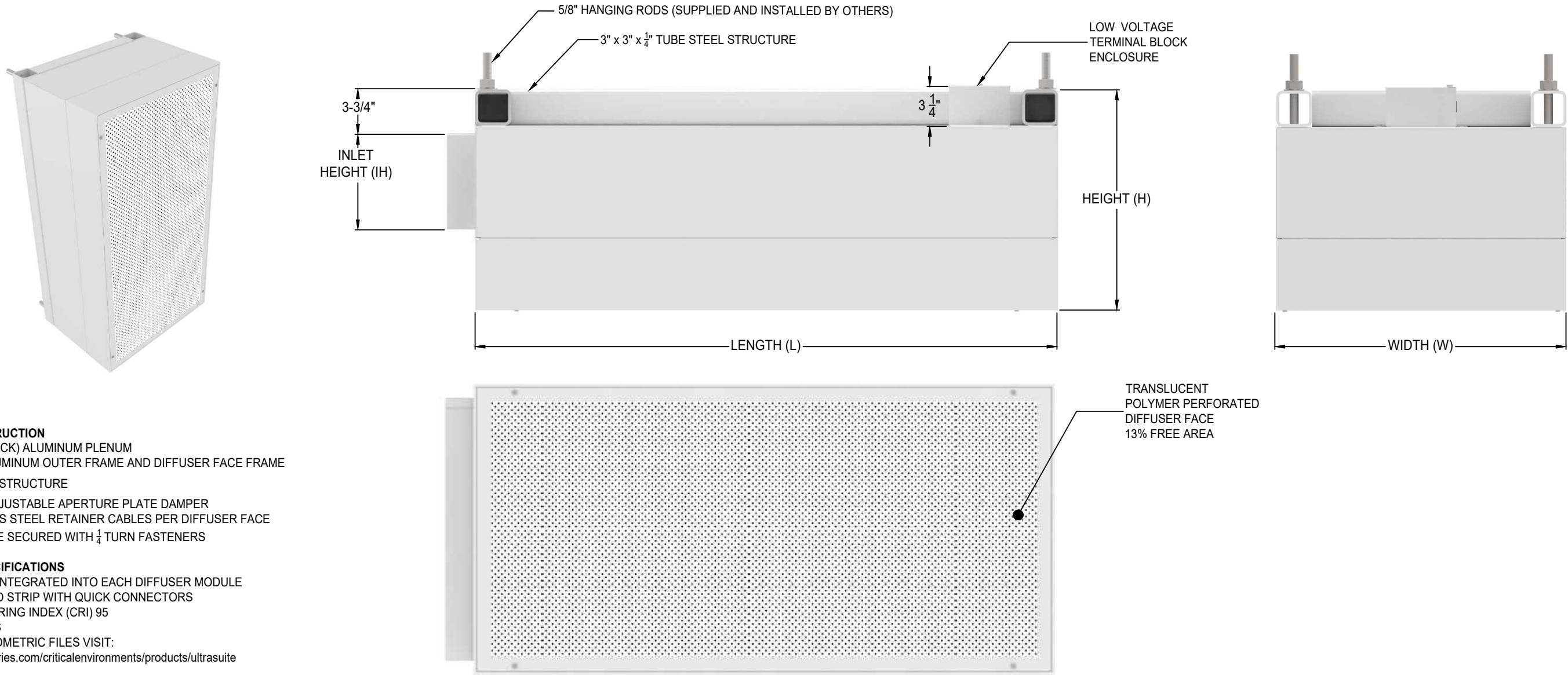
271596

Revision: A

08-01-2023

ULTRASUITE[®] + STRUCTURE

OPERATING ROOM DIFFUSER SYSTEM WITH INTEGRATED LED LIGHTING AND STEEL STRUCTURAL SUPPORT



- STANDARD CONSTRUCTION**
- 14 GA (.064" THICK) ALUMINUM PLENUM
 - EXTRUDED ALUMINUM OUTER FRAME AND DIFFUSER FACE FRAME
 - 3" x 3" x 1/4" HSS STRUCTURE
 - ROOM-SIDE ADJUSTABLE APERTURE PLATE DAMPER
 - TWO STAINLESS STEEL RETAINER CABLES PER DIFFUSER FACE
 - DIFFUSER FACE SECURED WITH 1/4 TURN FASTENERS

- LED LIGHTING SPECIFICATIONS**
- LED LIGHTING INTEGRATED INTO EACH DIFFUSER MODULE
 - IP67 RATED LED STRIP WITH QUICK CONNECTORS
 - COLOR RENDERING INDEX (CRI) 95
 - L80>60,000 HRS
 - FOR IES PHOTOMETRIC FILES VISIT:
 - www.priceindustries.com/criticalenvironments/products/ultrasuite

- FINISH**
- B12 WHITE
 - OPTIONAL AMB12 ANTI-MICROBIAL WHITE

- LED COLOR TEMPERATURE**
- 5000K (W935)
 - OPTIONAL 4000K (W930)

- LISTINGS**
- **UL 1598/CSA C22.2 #250.0** - AIR-HANDLING LUMINAIRES
 - **UL 2043** - FIRE TEST FOR HEAT AND VISIBLE SMOKE RELEASE FOR DISCRETE PRODUCTS AND THEIR ACCESSORIES INSTALLED IN AIR-HANDLING SPACES
 - **UL 2108/CSA 22.2#250.0** - LOW VOLTAGE LIGHTING SYSTEM
 - **UL 8750/CSA-C22.2 #250.13** - LIGHT EMITTING DIODE (LED) EQUIPMENT FOR USE IN LIGHTING PRODUCTS
 - **UL 1310/CSA C22.2 #223-M91** - CLASS 2 POWER UNITS
 - **UL 94** - FLAMMABILITY OF PLASTIC MATERIALS FOR PARTS IN DEVICES AND APPLIANCES
 - **IP 67** - RATED INGRESS PROTECTION AGAINST DUST AND LIQUIDS
 - **MIL-STD-461** - ELECTROMAGNETIC COMPATIBILITY

STANDARD MODULE SIZING CHART					
NOMINAL (W)	NOMINAL (L)	ACTUAL (W)	ACTUAL (L)	HEIGHT (H)	
				MIN	MAX
24.000	24.000	24.250	24.250	13	23
24.000	36.000	24.250	36.375	13	23
24.000	48.000	24.250	48.500	13	23

- STANDARD HEIGHT (H) = 18"
- MINIMUM HEIGHT WITH HEPA FILTER = 15"
- MINIMUM WIDTH WITH HEPA FILTER = 12"
- MAX INLET HEIGHT (IH) = HEIGHT (H) - 10"
- MAX INLET HEIGHT (IH) WITH HEPA = HEIGHT (H) - 11"

PRICE CEILING SYSTEM WEIGHTS		
PRICE SUPPLIED COMPONENTS	TOTAL SQUARE FEET =195 SQ.FT.	2023 lbs.
STRUCTURE	104 SQ.FT.	1290 lbs.
USA	96 SQ.FT.	672 lbs.
HGWC	51 SQ.FT.	26 lbs.
PANELS	48 SQ.FT.	36 lbs.

price

CRITICAL ENVIRONMENTS

Project:

271596

Revision: A

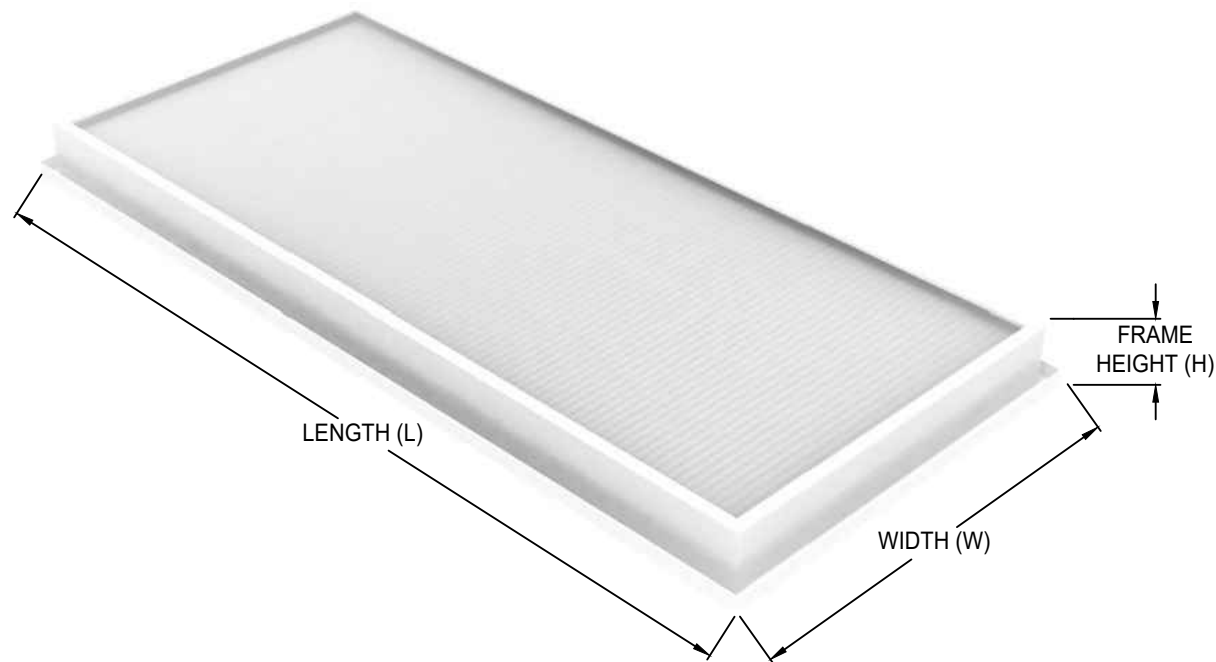
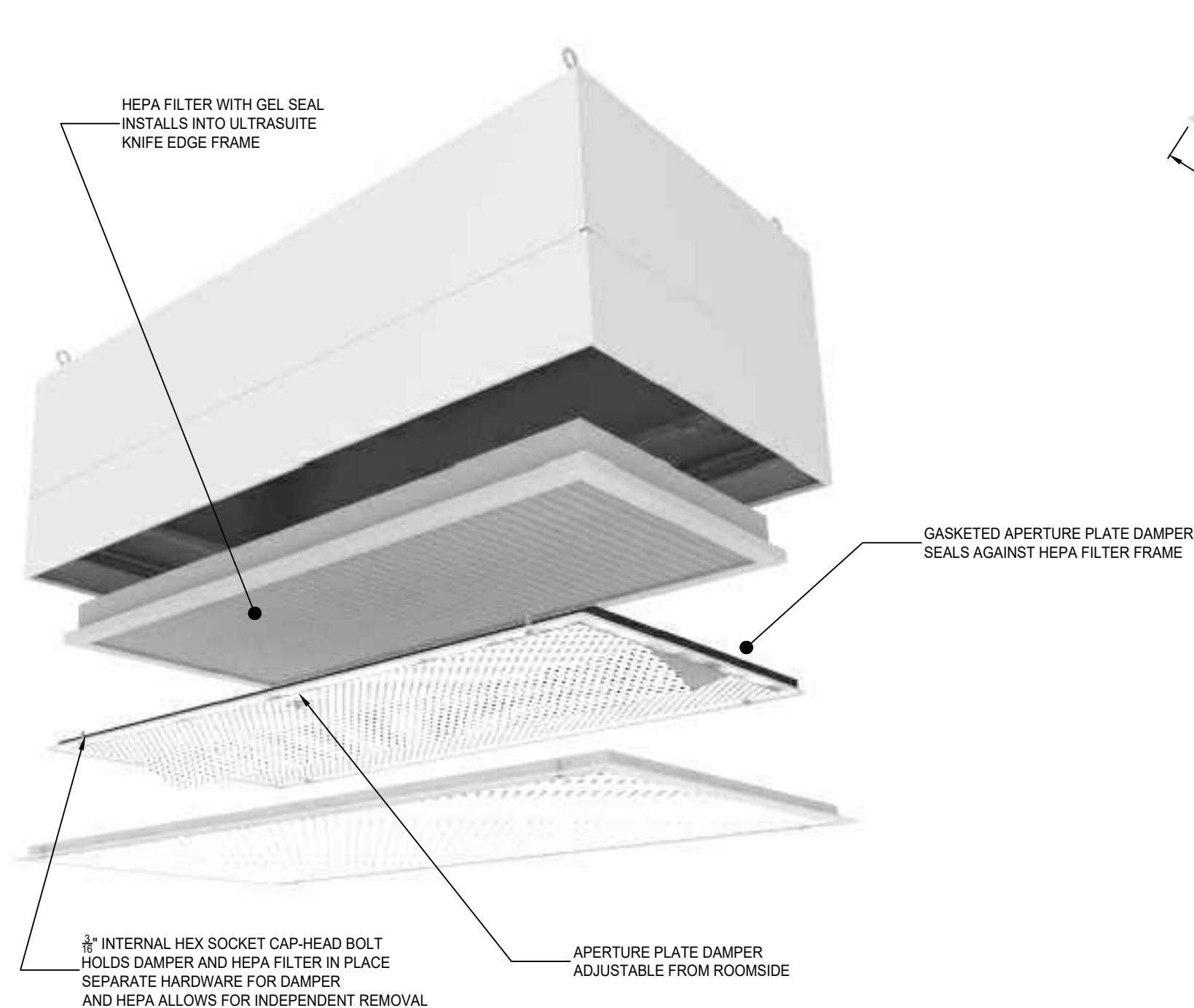
08-01-2023

ULTRASUITE[®] + STRUCTURE

OPERATING ROOM DIFFUSER SYSTEM WITH INTEGRATED LED LIGHTING

FACE ACCESS APERTURE PLATE DAMPER DETAILS

○ OPTIONAL ROOMSIDE HEPA FILTRATION



STANDARD FILTER SIZING CHART				
REPLACEMENT PART #	NOMINAL (W)	NOMINAL (L)	ACTUAL (W)	ACTUAL (L)
042299-029	24	24	19.88	19.88
042299-030	24	36	19.88	32.01
042299-032	24	48	19.88	44.13

- NOTES:**
- FILTER PLEATS RUN PARALLEL TO THE WIDTH (W) DIMENSION
 - DIMENSIONS W & L TOLERANCES +/- $\frac{1}{16}$ "
 - FILTERS COME WITH GEL SEAL FILLED CHANNEL
 - FILTERS MUST BE ORDERED SEPARATELY UNDER THE FTR-1-X LINESTRING
- FRAME DETAILS:**
- MATERIAL: ANODIZED EXTRUDED ALUMINUM
 - THICKNESS: $\frac{1}{16}$ " (MINIMUM)
 - FILTERS ARE UL 900 CLASS 1 CERTIFIED
 - EFFICIENCY AND LEAK SCAN TESTED
 - HEPA EFFICIENCY: 99.99% (.3 MICRON)
 - MINIMUM MODULE WIDTH FOR ROOMSIDE HEPA FILTRATION IS 12"

price

CRITICAL ENVIRONMENTS

Project:

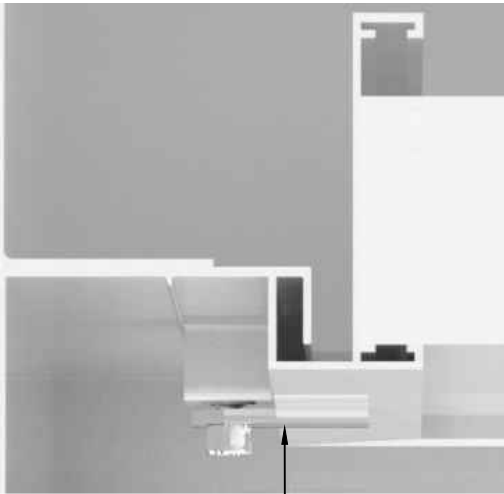
271596

Revision: A

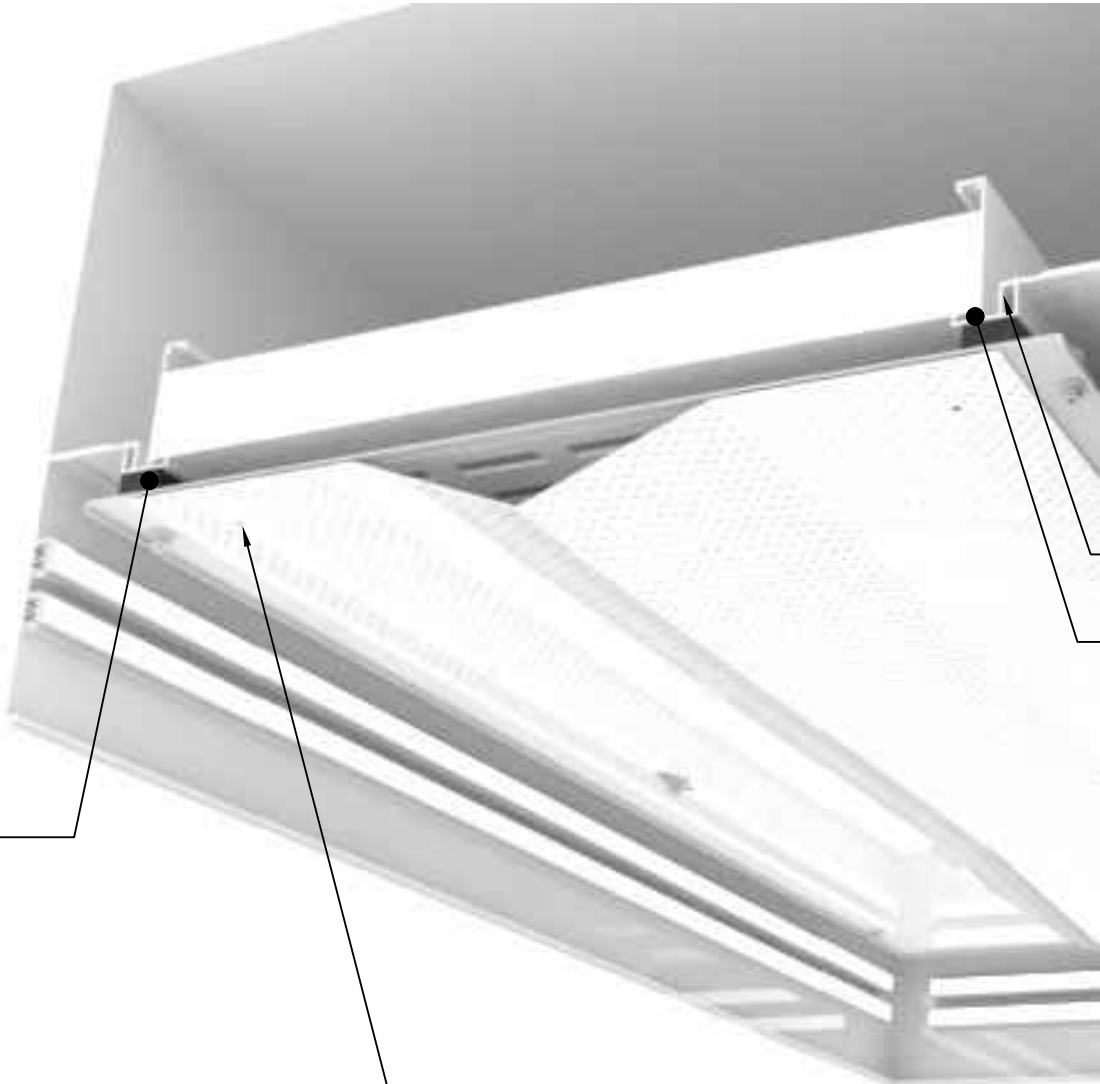
08-01-2023

ULTRASUITE[®] + STRUCTURE
OPERATING ROOM DIFFUSER SYSTEM WITH INTEGRATED LED LIGHTING
FACE ACCESS APERTURE PLATE DAMPER DETAILS
○ OPTIONAL ROOMSIDE HEPA FILTRATION

FILTER HOLD DOWN TAB DETAIL



OPTIONAL
FILTER HOLD
DOWN TAB

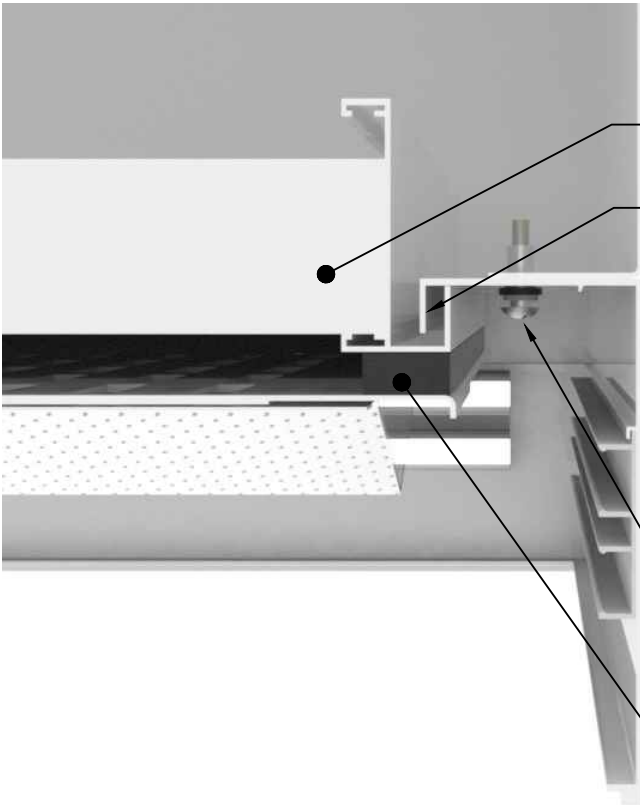


APERTURE PLATE
DAMPER WITH UL2043
RATED GASKET
SEALS AGAINST
THE KNIFE EDGE

DAMPER SECURED
IN PLACE WITH SCREWS
INSTALL BY USING $\frac{3}{16}$ " ALLEN KEY

KNIFE EDGE
HEPA FILTER
GEL SEAL

STATIC PRESSURE PORT DETAIL



OPTIONAL
HEPA FILTER
KNIFE EDGE

STATIC
PRESSURE
PORT

APERTURE PLATE
DAMPER WITH UL2043
RATED GASKET
SEALS AGAINST
THE HEPA FRAME

price | **CRITICAL ENVIRONMENTS**

Project:

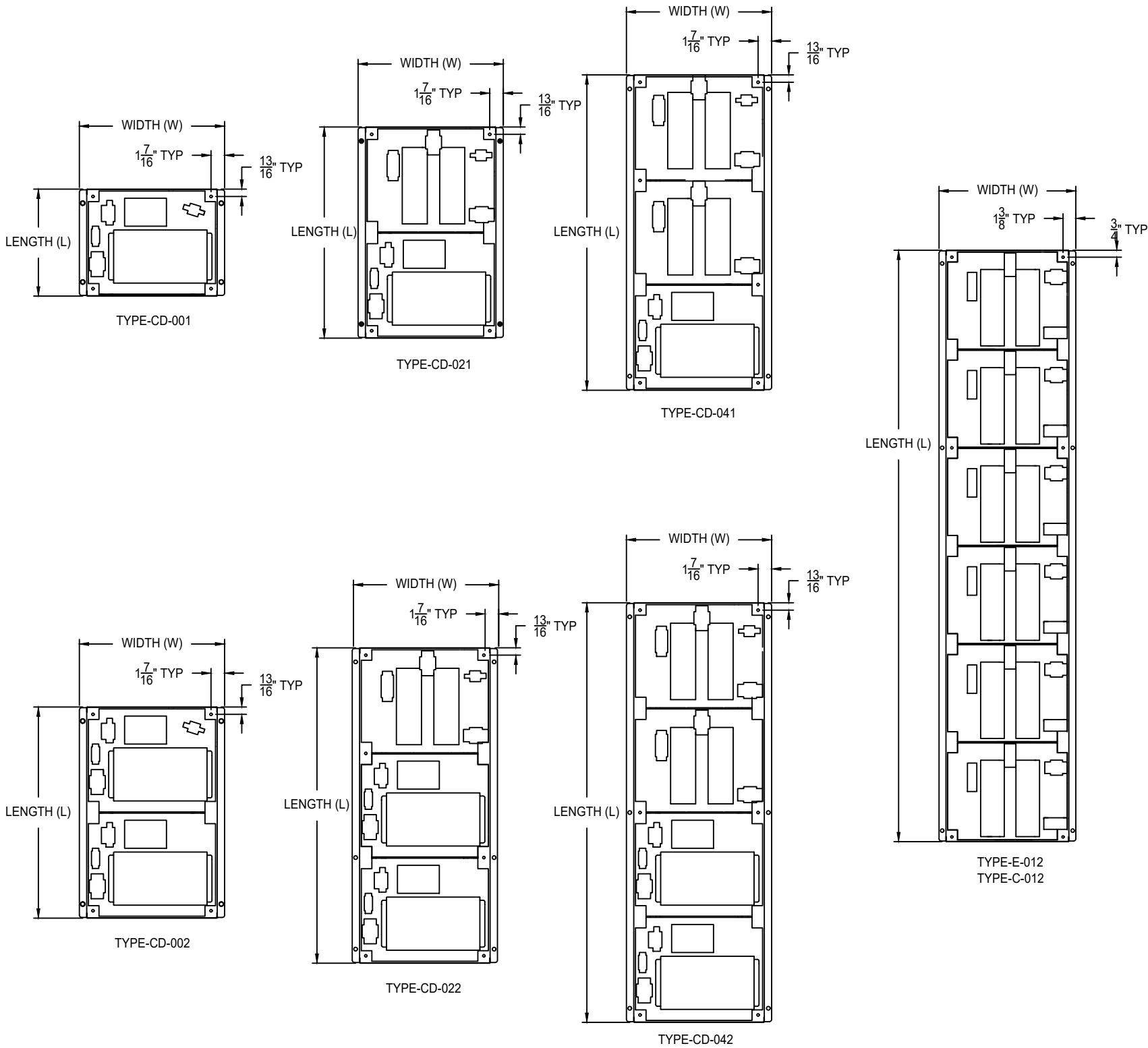
271596

Revision: A

08-01-2023

ULTRASUITE® + STRUCTURE

OPERATING ROOM DIFFUSER SYSTEM WITH INTEGRATED LED LIGHTING URDC ULTRA REMOTE DRIVER CABINETS - STANDARD OFFERINGS



- ALL DRIVER CABINETS ARE ORDERED ON URDC-1-X LINESTRING.
- REMOTE DRIVER CABINETS REQUIRE SINGLE POINT HIGH VOLTAGE (120-277v~) CONNECTION (277V~ RECOMMENDED).
- ALL DIMMING SWITCHES ARE ORDERED ON UCA-1-X LINESTRING.
- 0-10V DIMMING SWITCH SHIPPED LOOSE. THE TOTAL LENGTH FOR 0-10V CONTROL SIGNAL WIRING FOR THIS CONTROL SHOULD NOT EXCEED 500'. DO NOT USE WIRE SMALLER THAN 20 AWG.
- 8A AND 16A 0-10V DIMMING SWITCHES AVAILABLE. DIMMING ZONES AND CONTROL ARE COMPLETELY CUSTOMIZABLE.
- 0-10V DIMMING SIGNAL FROM SWITCH CAN CONTROL UP TO 100 DRIVERS.
- LED DRIVER TYPE E OFFERS CONTINUOUS, FLICKER-FREE DIMMING FROM 100% TO 1% WITH 0-10 VOLTAGE DIMMER SHIPPED LOOSE OR DIMMING SIGNAL PROVIDED BY OTHERS.
- LED DRIVER TYPE C AND CD OFFERS CONTINUOUS, FLICKER-FREE DIMMING FROM 100% TO 10% WITH 0-10 VOLTAGE DIMMER SHIPPED LOOSE. OPTIONAL SOLID STATE RELAY WITH 4-32VDC RELAY SHUT OFF SIGNAL AND 0-10VDC DIMMING SIGNAL PROVIDED BY OTHERS
- 30A DISCONNECT SWITCH AVAILABLE TO PROVIDE FULL SYSTEM SHUTOFF WHEN UTILIZING 0-10V SIGNAL
- LED DRIVERS SHIP FACTORY WIRED AND INSTALLED IN REMOTE DRIVER CABINETS.
- URDC DRIVER CABINETS CAN BE WALL MOUNTED, TYPICALLY IN AN ADJACENT EQUIPMENT ROOM, OR INSTALLED ABOVE THE CEILING. DRIVER CABINETS CANNOT BE RECESSED BETWEEN WALL STUDS AS THEY REQUIRE VENTILATION.
- ULTRASUITE MODULES COME WITH FACTORY WIRED AND INSTALLED TOP MOUNTED LOW VOLTAGE TERMINAL BLOCK ENCLOSURE
- INCOMING HIGH VOLTAGE POWER AND LOW VOLTAGE CONNECTION BETWEEN ULTRASUITE MODULES AND REMOTE DRIVER CABINET ARE THE RESPONSIBILITY OF THE INSTALLER.
- MAX DISTANCE BETWEEN ULTRASUITE MODULE AND REMOTE DRIVER CABINET IS DEPENDANT ON WIRE GAUGE TO MINIMIZE VOLTAGE DROP. SEE TABLE BELOW.
- SEE ULTRASUITE INSTALLATION MANUAL AVAILABLE AT <https://www.priceindustries.com/criticalenvironments/products/ultrasuite> FOR RECOMMENDED REMOTE DRIVER CABINET AND ULTRASUITE SYSTEM INSTALLATION.

DRIVER CABINET	# OF MODULES	# OF DRIVERS	L	W	H	WEIGHT	AC CURRENT - TYPE E (120VAC / 277VAC)	AC CURRENT - TYPE C (120VAC / 277VAC)
TYPE E/C-001	1	1	0'-11 1/2"	1' - 3 1/2"	5"	7 lbs.	0.95A / 0.4A	1.2A / 0.50A
TYPE E/C-002		2	0'-11 1/2"	1' - 3 1/2"	5"	15 lbs.	1.9A / 0.8A	2.4A / 1.7A
TYPE E/C-003	2	3	1' - 10 9/16"	1' - 3 1/2"	5"	22 lbs.	2.95A / 1.2A	3.6A / 2.9A
TYPE E/C-004		4	1' - 10 9/16"	1' - 3 1/2"	5"	30 lbs.	3.8A / 1.6A	4.8A / 4.1A
TYPE E/C-005	3	5	2' - 9 11/16"	1' - 3 1/2"	5"	37 lbs.	4.75A / 2A	6.0A / 5.3A
TYPE E/C-006		6	2' - 9 11/16"	1' - 3 1/2"	5"	45 lbs.	5.7A / 2.4A	7.2A / 6.5A
TYPE E/C-007	4	7	3' - 8 13/16"	1' - 3 1/2"	5"	52 lbs.	6.65A / 2.8A	8.4A / 7.7A
TYPE E/C-008		8	3' - 8 13/16"	1' - 3 1/2"	5"	60 lbs.	7.6A / 3.2A	9.6A / 8.9A
TYPE E/C-009	5	9	4' - 7 15/16"	1' - 3 1/2"	5"	67 lbs.	8.55A / 3.6A	10.8A / 10.1A
TYPE E/C-010		10	4' - 7 15/16"	1' - 3 1/2"	5"	75 lbs.	9.5A / 4A	12.0A / 11.3A
TYPE E/C-011	6	11	5' - 7 1/16"	1' - 3 1/2"	5"	82 lbs.	10.45A / 4.4A	13.2A / 12.5A
TYPE E/C-012		12	5' - 7 1/16"	1' - 3 1/2"	5"	90 lbs.	11.4A / 4.8A	14.4A / 13.7A

DRIVER CABINET	# OF MODULES	# OF DRIVERS	L	W	H	WEIGHT	AC CURRENT - TYPE E (120VAC / 277VAC)
TYPE-CD-001	3	1	0'-11 1/2"	1' - 3 1/2"	5"	20 lbs.	7A / 2.9A
TYPE-CD-021	4	3	1' - 10 9/16"	1' - 3 1/2"	5"	35 lbs.	9.4A / 3.9A
TYPE-CD-041	5	5	2' - 9 11/16"	1' - 3 1/2"	5"	50 lbs.	11.8A / 4.9A
TYPE-CD-002	6	2	1' - 10 9/16"	1' - 3 1/2"	5"	40 lbs.	14.0A / 5.8A
TYPE-CD-022	7	4	2' - 9 11/16"	1' - 3 1/2"	5"	55 lbs.	- / 6.8A
TYPE-CD-042	8	6	3' - 8 13/16"	1' - 3 1/2"	5"	70 lbs.	- / 7.8A

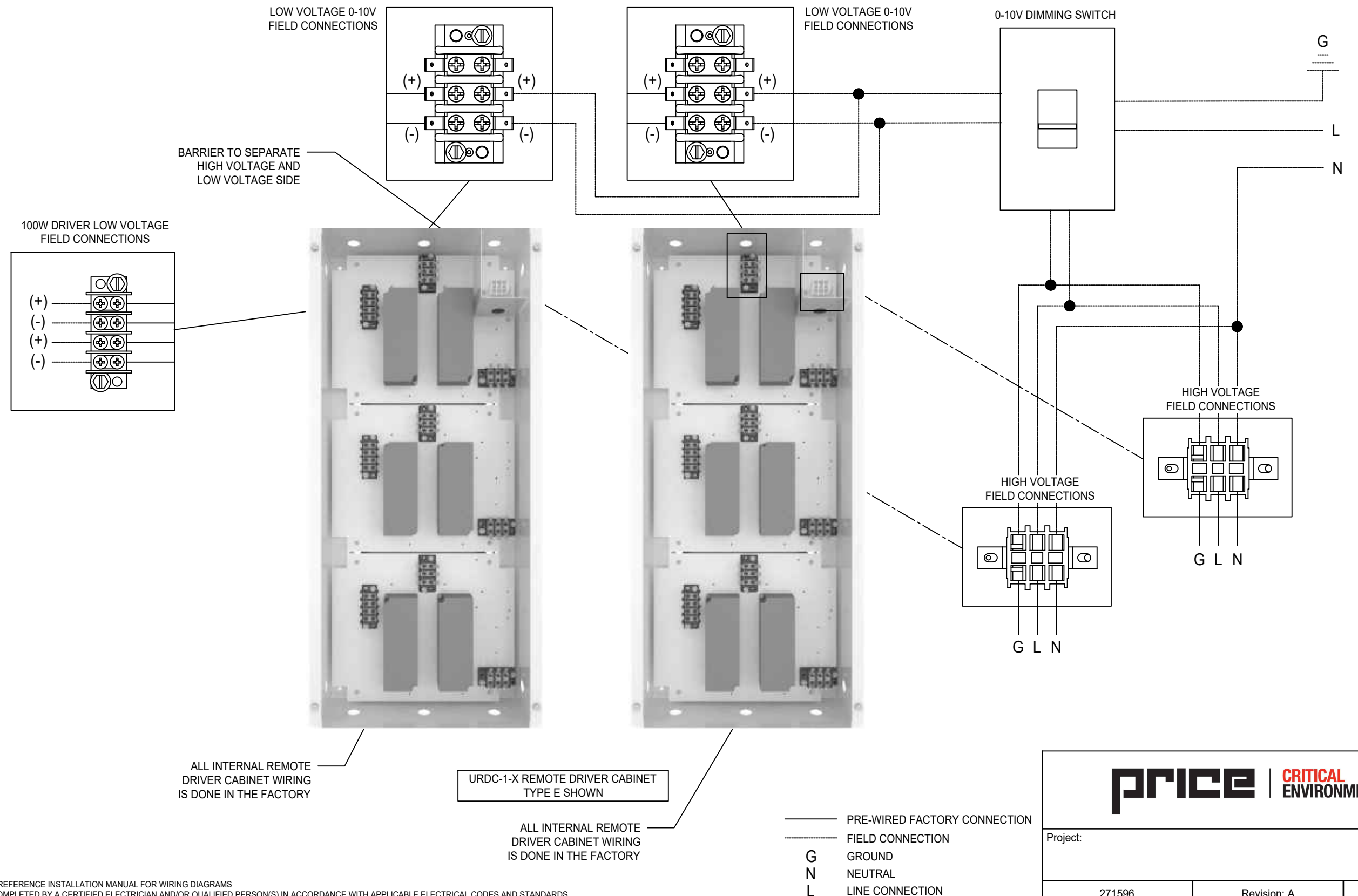
- TYPE C & CD OFFERS 100 TO 10% DIMMING
- TYPE E OFFERS 100 TO 1% DIMMING
- TYPE CD OFFERS OVER 40% SPACE SAVING FOR CABINET INSTALLATION
- TYPE C ALLOWS FOR RECESSED TYPE IC INSTALLATION
- TYPE E & CD ALLOWS FOR SURFACE, WALL OR CEILING MOUNT INSTALLATION. PASSIVE VENTILATION OF CABINET IS REQUIRED THROUGH OUTER BOX LOUVERS

price CRITICAL ENVIRONMENTS		
Project:		
271596	Revision: A	08-01-2023

ULTRASUITE® + STRUCTURE

OPERATING ROOM DIFFUSER SYSTEM WITH INTEGRATED LED LIGHTING

○ URDC ULTRA REMOTE DRIVER CABINETS - WIRING FOR SINGLE DIMMING ZONE (100 TO 1% DIMMING)



- VISUAL WIRING DETAIL IS SHOWN FOR REFERENCE ONLY, REFERENCE INSTALLATION MANUAL FOR WIRING DIAGRAMS
- INSTALLATION WORK AND ELECTRICAL WIRING MUST BE COMPLETED BY A CERTIFIED ELECTRICIAN AND/OR QUALIFIED PERSON(S) IN ACCORDANCE WITH APPLICABLE ELECTRICAL CODES AND STANDARDS

price | **CRITICAL ENVIRONMENTS**

Project:

271596

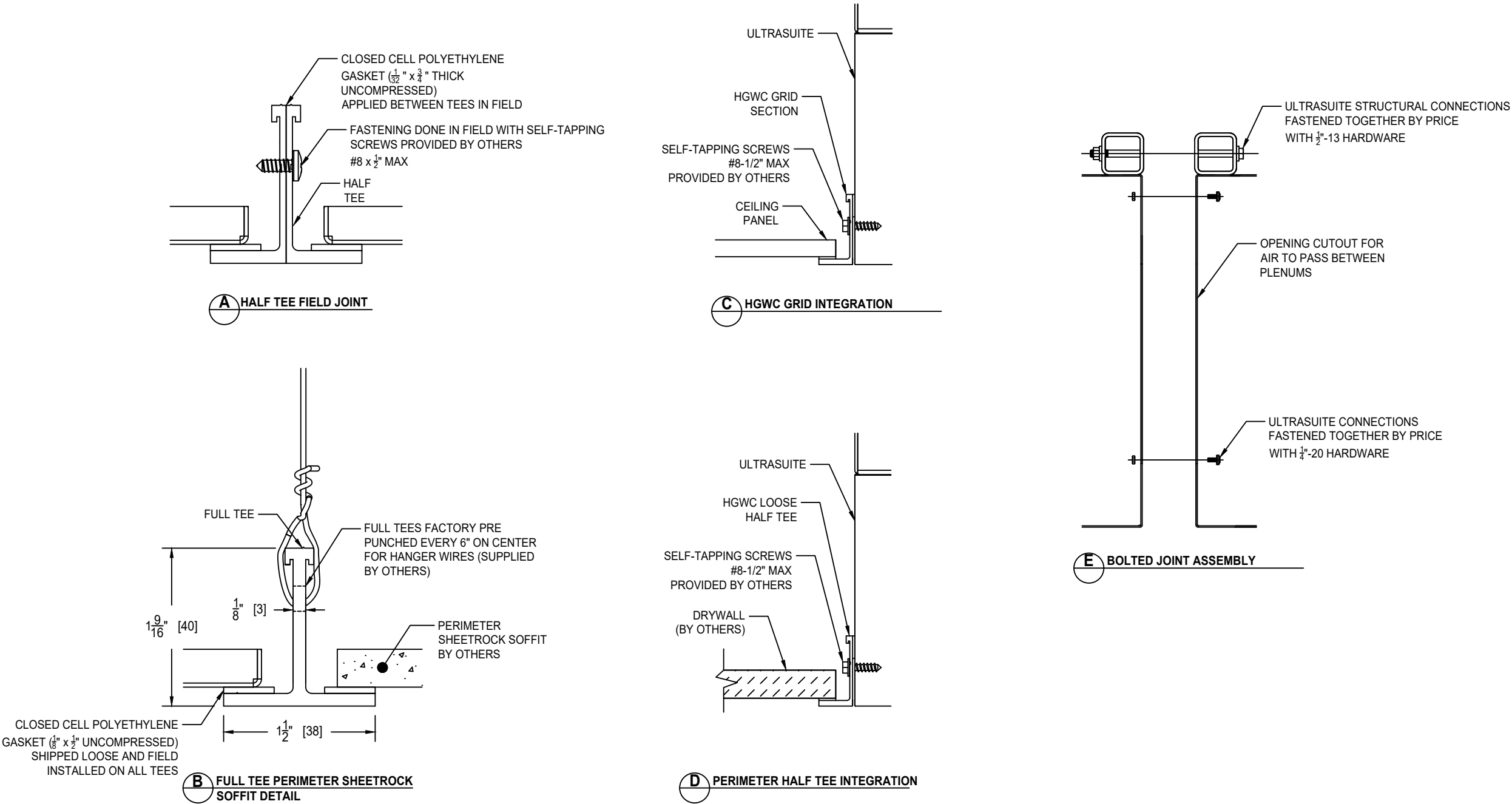
Revision: A

08-01-2023

ULTRASUITE[®] + STRUCTURE

OPERATING ROOM DIFFUSER SYSTEM WITH INTEGRATED LED LIGHTING AND STEEL STRUCTURAL SUPPORT

HGWC INTEGRATION DETAILS

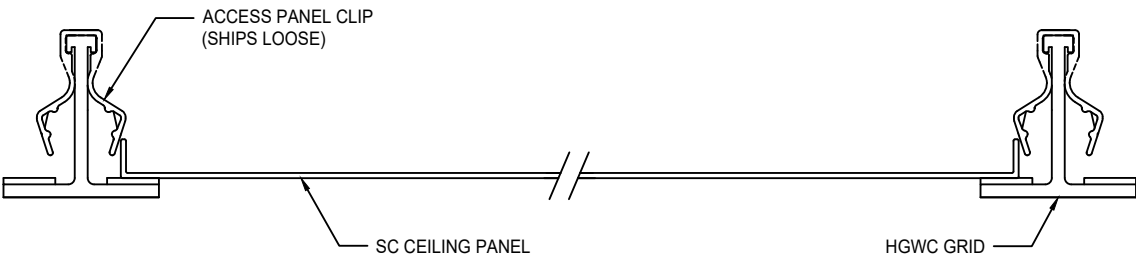
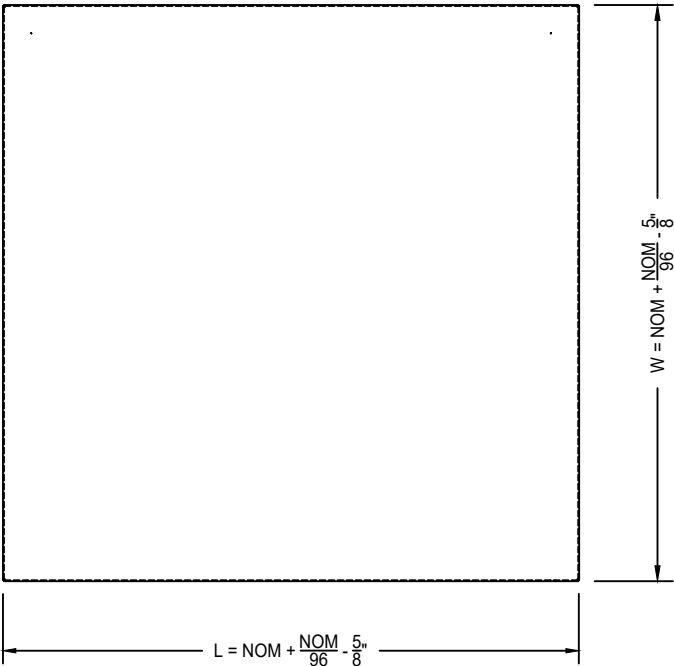


<div>price CRITICAL ENVIRONMENTS</div>		
Project:		
271596	Revision: A	08-01-2023

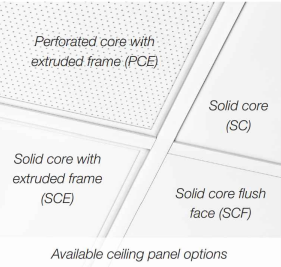
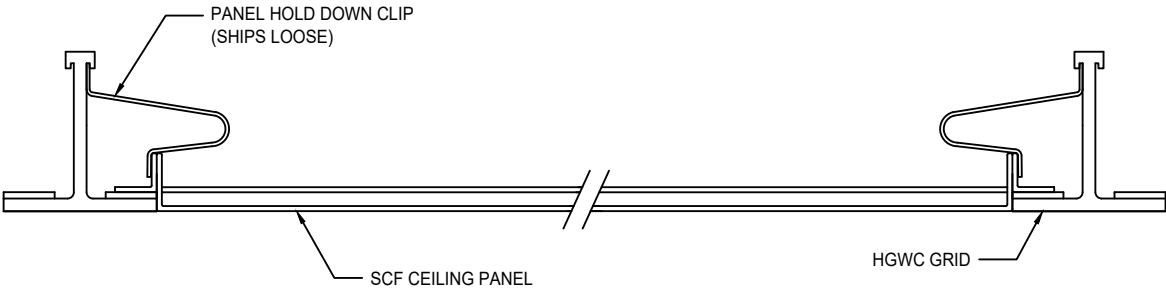
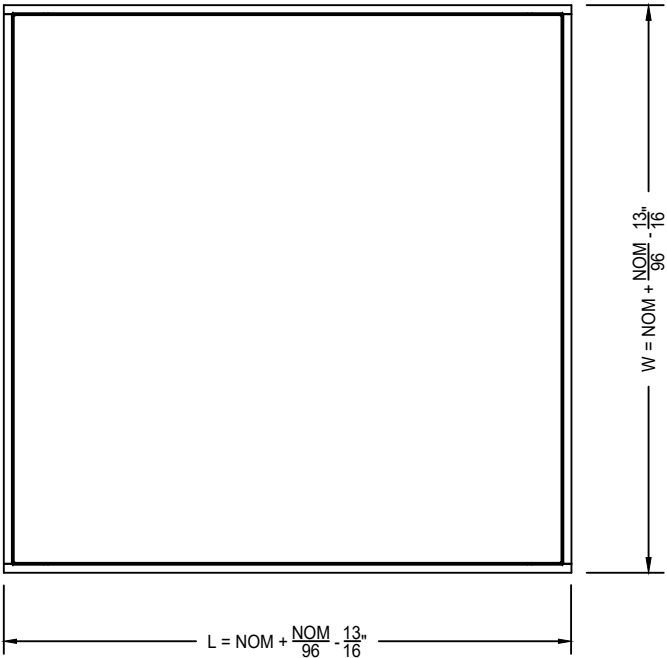
ULTRASUITE[®] + STRUCTURE

OPERATING ROOM DIFFUSER SYSTEM WITH INTEGRATED LED LIGHTING AND STEEL STRUCTURAL SUPPORT

SC - SOLID CORE



SCF - SOLID CORE WITH FLUSH MOUNT FRAME



PANEL MATERIAL / FINISH:

- SC PANEL - .080" ALUMINUM / B12 STANDARD WHITE
- SCF PANEL - .040" ALUMINUM / B12 STANDARD WHITE

CEILING TYPE:

- HGWC - 1 1/2" HOSPITAL GRADE WELDED CEILING SYSTEM

price | **CRITICAL ENVIRONMENTS**

Project:

271596

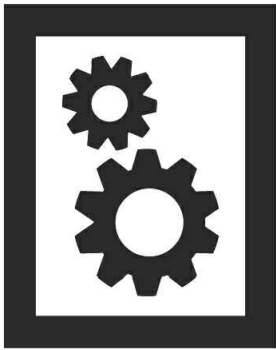
Revision: A

08-01-2023

ULTRASUITE[®] + STRUCTURE

OPERATING ROOM DIFFUSER SYSTEM WITH INTEGRATED LED LIGHTING AND STEEL STRUCTURAL SUPPORT

SUPPORTING CONTENT



MANUALS

- ULTRASUITE MANUAL
- FTR ROOM-SIDE REPLACEABLE FILTER (RSR) QUICK START GUIDE
- URDC ULTRA DRIVER CABINET MANUAL
- UCA ULTRA COMPONENTS AND ACCESSORIES MANUAL
- HGWC HOSPITAL GRADE WELDED CEILING SYSTEM MANUAL



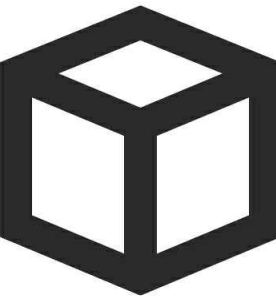
CATALOGUE / PERFORMANCE

- USA ULTRASUITE CATALOGUE
- USA ULTRASUITE PERFORMANCE
- USA ULTRASUITE PERFORMANCE (METRIC)



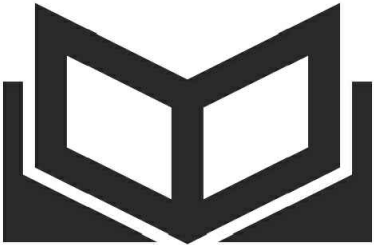
SPECIFICATIONS

- USA ULTRASUITE SPECIFICATIONS



REVIT FILES

- USAS TRADITIONAL OR REVIT FILE



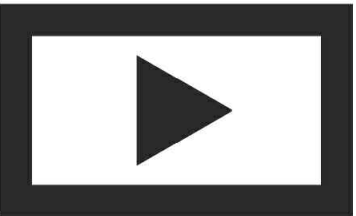
BROCHURES

- USA ULTRASUITE BROCHURE
- USA ULTRASUITE OPERATING ROOM HVAC DESIGN GUIDE
- USA ULTRASUITE PROJECT LIST
- USA ULTRASUITE CASE STUDY LIBRARY



SUBMITTALS

- UCA ULTRA COMPONENTS AND ACCESSORIES SUBMITTAL
- FTR REPLACEMENT FILTER SUBMITTAL
- HGWC HOSPITAL GRADE WELDED CEILING SYSTEM SUBMITTAL



VIDEOS

- USA ULTRASUITE LAUNCH VIDEO
- USA ULTRASUITE INSTALLATION TIME LAPSE VIDEO
- USA ULTRASUITE SMOKE TEST VIDEO
- USA ULTRASUITE IN BAYLOR SCOTT & WHITE MEDICAL CENTER TESTIMONIAL
- HEPA FILTER REPLACEMENT (USA AND UFFU) VIDEO
- USA ULTRASUITE SEISMIC TESTING



FOR MORE INFORMATION ON PRICE ULTRASUITE SYSTEMS, VISIT
PRICEINDUSTRIES.COM

<div>price CRITICAL ENVIRONMENTS</div>		
Project:		
271596	Revision: A	08-01-2023